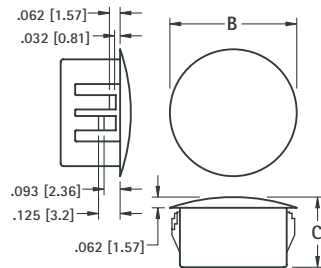
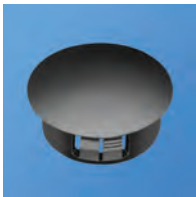


NYLON HOLE PLUGS

Closes unused chassis holes quickly and economically. Plugs are abrasion and vibration resistant.

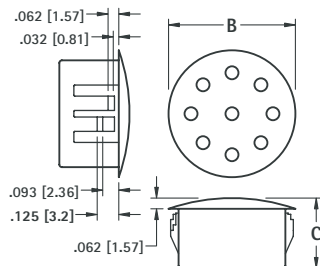
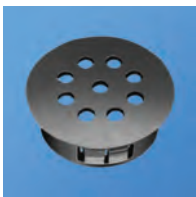


MATERIAL: Nylon 6/6, Matte Finish, Black

CAT. NO.	HOLE DIAMETER	PANEL THICKNESS	B	C
8600	.250 (6.4)	.062 (1.57)	.312 (7.9)	.312 (7.9)
8601	.312 (7.9)	.062 (1.57)	.375 (9.5)	.312 (7.9)
8602	.375 (9.5)	.125 (3.2)	.468 (11.9)	.406 (10.3)
8603	.500 (12.7)	.125 (3.2)	.578 (14.7)	.406 (10.3)
8604	.625 (15.9)	.125 (3.2)	.734 (18.6)	.406 (10.3)
8605	.750 (19.1)	.125 (3.2)	.921 (23.4)	.406 (10.3)
8606	.875 (22.2)	.125 (3.2)	1.015 (25.8)	.453 (11.5)
8607	1.000 (25.4)	.125 (3.2)	1.203 (30.6)	.453 (11.5)
8608	1.125 (28.6)	.125 (3.2)	1.218 (30.9)	.453 (11.5)
8609	1.250 (31.8)	.125 (3.2)	1.375 (34.9)	.453 (11.5)
8610	1.375 (34.9)	.125 (3.2)	1.500 (38.1)	.453 (11.5)
8611	1.500 (38.1)	.125 (3.2)	1.671 (42.4)	.453 (11.5)

NYLON VENT PLUGS

Used to cover chassis holes while allowing air flow for ventilation.

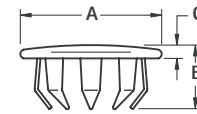


MATERIAL: Nylon 6/6, Matte Finish, Black

CAT. NO.	HOLE DIAMETER	PANEL THICKNESS	B	C
8612	.875 (22.2)	.125 (3.2)	1.015 (25.8)	.453 (11.5)
8613	1.000 (25.4)	.125 (3.2)	1.218 (30.9)	.453 (11.5)

STEEL HOLE PLUGS

Excellent spring retention. Plugs will cover chassis holes, wiring outlets, access holes or unused openings.



MATERIAL: Steel, Nickel Plate

CAT. NO.	HOLE DIAMETER	PANEL THICKNESS	A	B	C	PRONGS
7600	.250 (6.4)	.031-.062 (.81-1.57)	.406 (10.3)	.234 (5.9)	.062 (1.57)	6
7601	.312 (7.9)	.047-.078 (1.19-1.98)	.437 (11.1)	.250 (6.4)	.062 (1.57)	6
7602	.375 (9.5)	.047-.062 (1.19-1.57)	.500 (12.7)	.234 (5.9)	.062 (1.57)	6
7603	.500 (12.7)	.031-.062 (.81-1.57)	.656 (16.7)	.281 (7.1)	.078 (1.98)	8
7604	.625 (15.9)	.062-.093 (1.57-2.36)	.812 (20.6)	.296 (7.5)	.078 (1.98)	8
7605	.750 (19.1)	.062-.093 (1.5-2.36)	.921 (23.4)	.296 (7.5)	.078 (1.98)	12
7606	.875 (22.2)	.062-.093 (1.57-2.36)	1.062 (27.0)	.296 (7.5)	.062 (1.57)	12
7607	1.000 (25.4)	.062-.156 (1.57-3.9)	1.140 (29.0)	.328 (8.3)	.093 (2.36)	12
7608	1.125 (28.6)	.031-.125 (.79-3.2)	1.312 (33.3)	.343 (8.7)	.093 (2.36)	12
7609	1.250 (31.8)	.062-.093 (1.57-2.36)	1.437 (36.5)	.343 (8.7)	.093 (2.36)	12
7610	1.375 (34.9)	.031-.125 (.79-3.2)	1.562 (39.7)	.406 (10.3)	.078 (1.98)	12
7611	1.500 (38.1)	.031-.062 (.79-1.57)	1.640 (41.7)	.406 (10.3)	.093 (2.36)	12

RECESSED BUMPERS

Provides excellent traction and shock absorbing qualities. available with or without Mold-in Washers.



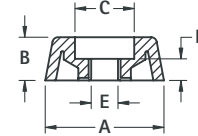
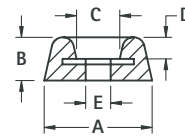
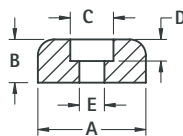
FIG. 1



FIG. 2 Mold-In Washer



FIG. 3 Mold-In Washer



MATERIAL: Rubber, BUNA S (Figs. 1 & 2), Thermoplastic (Fig. 3)

CAT. NO.	FIG.	A	B	C	D	E	SCREW SIZE
720	1	.500 (12.7)	.250 (6.4)	.250 (6.4)	.187 (4.7)	.125 (3.2)	# 4
721	1	.625 (15.9)	.312 (7.9)	.250 (6.4)	.187 (4.7)	.125 (3.2)	# 4
722	1	.718 (18.2)	.437 (11.1)	.250 (6.4)	.218 (5.5)	.125 (3.2)	# 4
723	2	.937 (23.8)	.375 (9.5)	.375 (9.5)	.187 (4.7)	.187 (4.7)	# 8
724*	3	.687 (17.4)	.250 (6.4)	.343 (8.7)	.125 (3.2)	.155 (3.9)	# 6
725*	3	.875 (22.2)	.312 (7.9)	.406 (10.3)	.125 (3.2)	.187 (4.7)	# 8
726*	3	1.062 (27.0)	.437 (11.1)	.468 (11.9)	.234 (5.9)	.200 (5.1)	# 10
727	3	.562 (14.3)	.375 (9.5)	.218 (5.5)	.187 (4.7)	.115 (2.9)	# 4
728	3	.750 (19.1)	.437 (11.1)	.265 (6.7)	.250 (6.4)	.148 (3.8)	# 6
729	3	.937 (23.8)	.625 (15.9)	.359 (9.1)	.297 (7.5)	.174 (4.4)	# 8

* Gray, All Others Black

SELF-LOCKING BUMPER FOOT

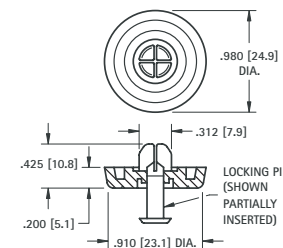


- A unique easy-to-install self-locking bumper foot
- Two piece assembly, furnished pre-assembled
- Vibration absorbing and skid resistant
- Mounts without screws or tools

Recommended Mounting Hole: .305 (7.8) diameter

MATERIAL:

Foot: Santoprene, Black **Pin:** Polypropylene, Black



CAT. NO. 717